



Tri-Shutter Card

What you'll need:

Hello Honey card stock base: 5-1/2" x 12"

Botanical Builders Dies

Botanical Gardens DSP pieces:

1/8" Circle Punch (flower centers)

2 @ 1-3/4" x 5-1/4" (A)

Banner Triple Punch

4 @ 1-3/4" x 1-1/4" (B)

2 @ 3-3/4" x 1-1/4" (C)

Itty Bitty Accents Punch Pack (2 white flowers for each larger flower center)

1 @ 1-3/4" x 2-1/4" (D)

Mossy Meadow and Cajon Craze ink pads

Mint Macaron card stock:

1 @ 3-3/4" x 2" (E)

Happy Birthday, Everyone stamp set

2 @ 3-3/4" x 2-1/4" (F)

Botanical Blooms stamp set

Whisper White card stock:

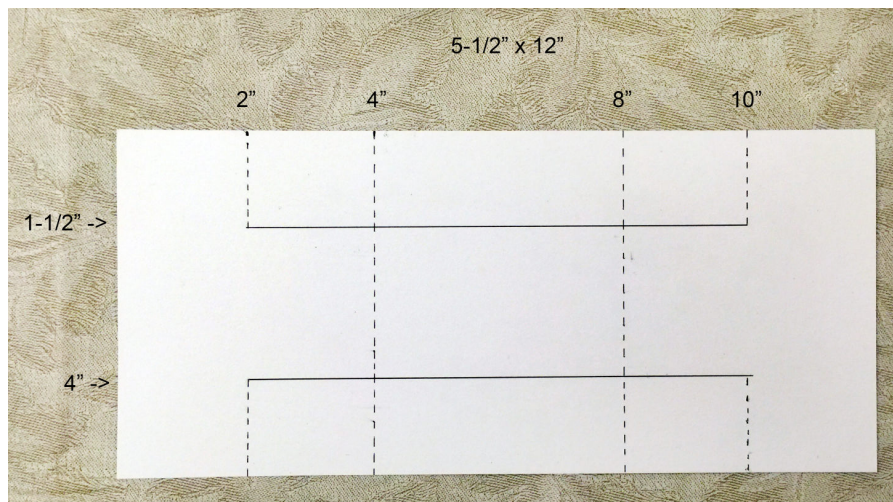
2 @ 3-1/2" x 2" (G)

scraps to punch flower centers

Hello Honey, Cajon Craze, and Old Olive card stock pieces for flowers & leaf

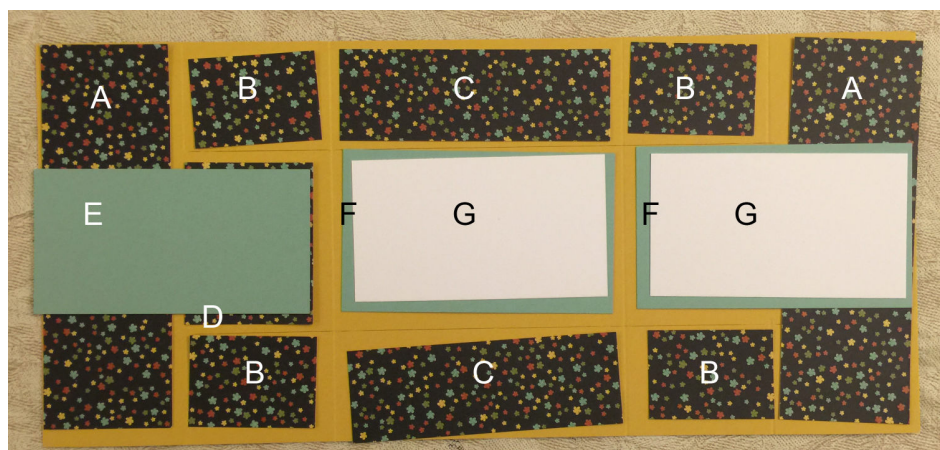
Cut the card base lengthwise as shown: 1-1/2" from each long side, and from 2" to 10".

Turn and score as shown at 2", 4", 8", and 10". Notice at 2" and 10", you score only from the outer edges to the cut lines.



Candy Ford
stampcandy.net
candy@stampcandy.net

Lay out the cut pieces on the card base as shown.



Cut piece E with the Banner Triple Punch. Stamp sentiment on one G piece. Stamp the leaf, and assemble flowers. Adhere all the pieces in place.



Fold the card with the middle sections going in the opposite direction from the top and bottom sections, as shown.



Candy Ford
stampcandy.net
candy@stampcandy.net