



Candy Ford  
Independent Stampin' Up Demonstrator  
candy@stampcandy.net

## **Easy Twist Pop-Up Panel Card**

These cards are very popular, and the instructions online vary greatly. Some are just way to complicated. This is the easiest way I've found to make it. I hope it helps you.

### **For the card base:**

Cut card stock to 4-1/4" x 11". Score at 5-1/2".

### **For the mechanism:**

Cut card stock to 8-1/2" x 10-3/4".

(SEE DIAGRAM A)

With the short (8-1/2") side at the top, score at 2-1/4", 4-1/4", and 6-1/4".

With the long (10-3/4") side at the top, score at 3-7/8", 5-3/8", and 6-7/8".

Cut away the rectangle at each of the four corners. This will give you a cross shape with two larger arms and two smaller arms. Angle the two smaller arms slightly by trimming each side approximately 1/4" in. It should look something like DIAGRAM A2.

Okay, here comes the most confusing part of the directions. Basically, you're going to fold it diagonally. (SEE DIAGRAM B)

Hold your finger at the intersection of score lines in the center of the cross. Fold one arm over so that the score line in its center meets the score line in the center of the adjacent arm. Press the fold that this creates with a bone folder.

Now do the same thing for the opposite side. You should have two new score lines that make an x in the center of the cross.

(SEE DIAGRAM C)

Hold the two smaller arms in your hands and fold them up (valley fold.) You will see how they naturally want to move toward the inside as the larger arms close on them.

Press it all with a bone folder to sharpen the creases.

### **For the panel:**

(SEE DIAGRAM D)

Cut card stock to 3" x 11". Score along the long (11") side at 2-3/4", 5-1/2", and 8-1/4". Fold the score lines to get a W shape.

### **To decorate the mechanism:**

Cut two pieces of paper to 4" x 5-1/4" each. Using the folded up mechanism as a guide, use scissors to cut the appropriate angle at one end. You can then use this piece as a guide for the second piece of paper.

If you prefer, you can just cut each piece of paper to 3-3/4" wide x 3-1/4" tall, and not worry about covering the part that goes to a point.

Glue to the mechanism interior.

**Note:** I do not recommend using Stampin' Dimensionals or any other thick adhesive on the inside of the card. There are plenty of layers inside already.

### **To decorate the panel:**

Cut four pieces of paper to 2-1/2" x 2-3/4" each. Glue each one to one of the four sections of the panel.

### **To attach the panel to the mechanism:**

(SEE DIAGRAM E)

Unfold the mechanism and lay it out flat with the smaller arms at the sides. Lay the panel down flat across the center of the mechanism from left to right. Make sure the center of the panel lines up with the center score line of the mechanism.

Holding everything in place, lift the left section of the panel, and apply adhesive to the lower section of the mechanism arm. Do not get any adhesive on the other side of the arm's score line. Lay the panel section back down and press to adhere.

Do the same thing on the other side except put adhesive on the upper section of the arm. Do not get any adhesive below the score line on the arm.

Open and close the mechanism to make sure it works correctly. The ends of the panel will stick out slightly from the end of the mechanism. This is fine.

### **To attach the mechanism to the card base:**

(SEE DIAGRAM F)

Fold up the mechanism, and line it up on the bottom half of the card base interior. Make sure the top point of the mechanism doesn't go past the card base's score line. The mechanism should be 1/8" smaller than the card base on all sides. Adhere to the card base.

Adhere the other side of the mechanism to the other half of the card base. Open and close to make sure it works properly. The ends of the panel should not be seen outside the card.



Candy Ford  
Independent Stampin' Up Demonstrator  
candy@stampcandy.net

**CUT AWAY YELLOW  
AREAS, THEN CUT  
AWAY GREEN AREAS**

**2-1/4"**

**4-1/4"**

**6-1/4"**



# MECHANISM

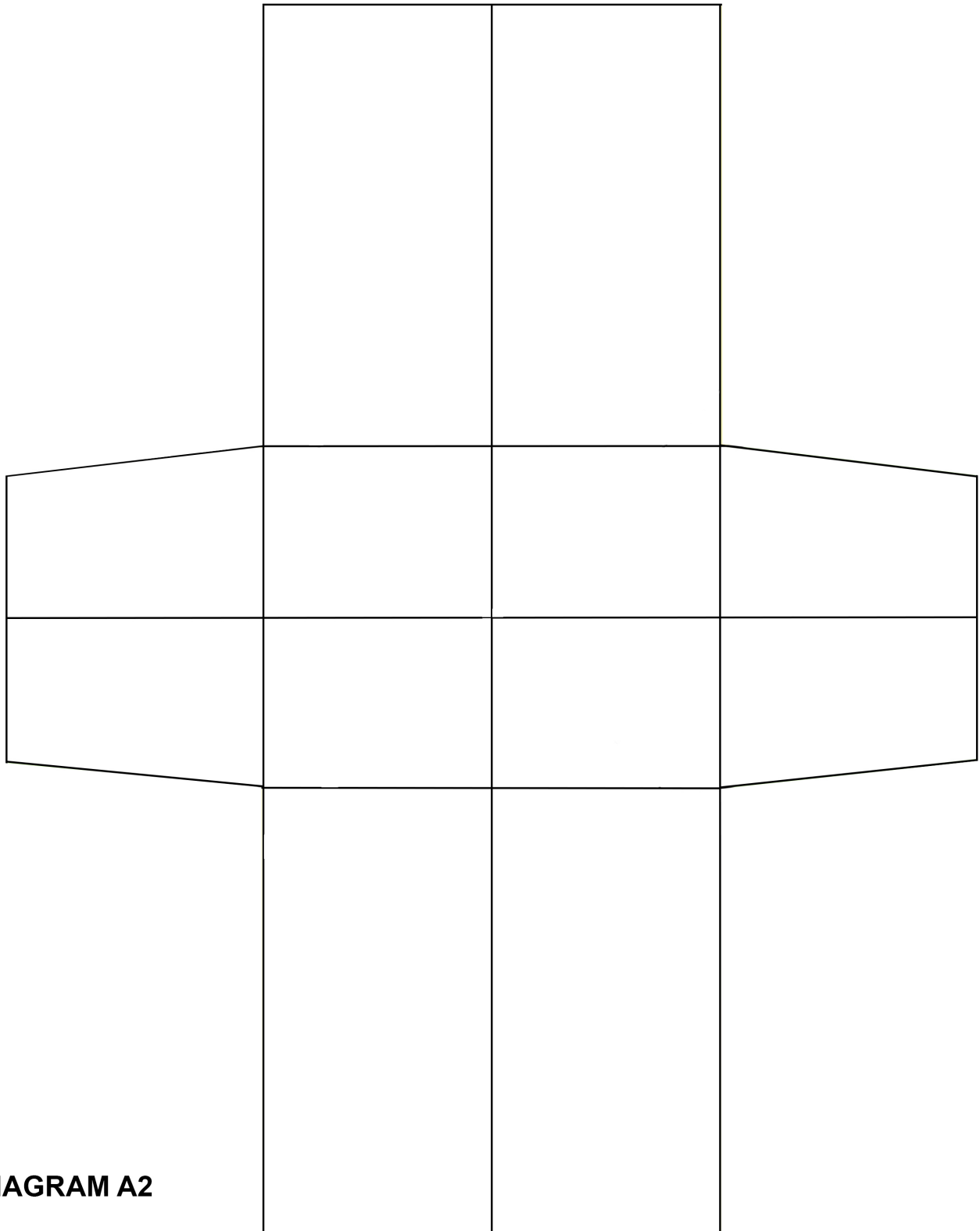
### DIAGRAM A



Candy Ford  
Independent Stampin' Up Demonstrator  
candy@stampcandy.net



Candy Ford  
Independent Stampin' Up Demonstrator  
[candy@stampcandy.net](mailto:candy@stampcandy.net)

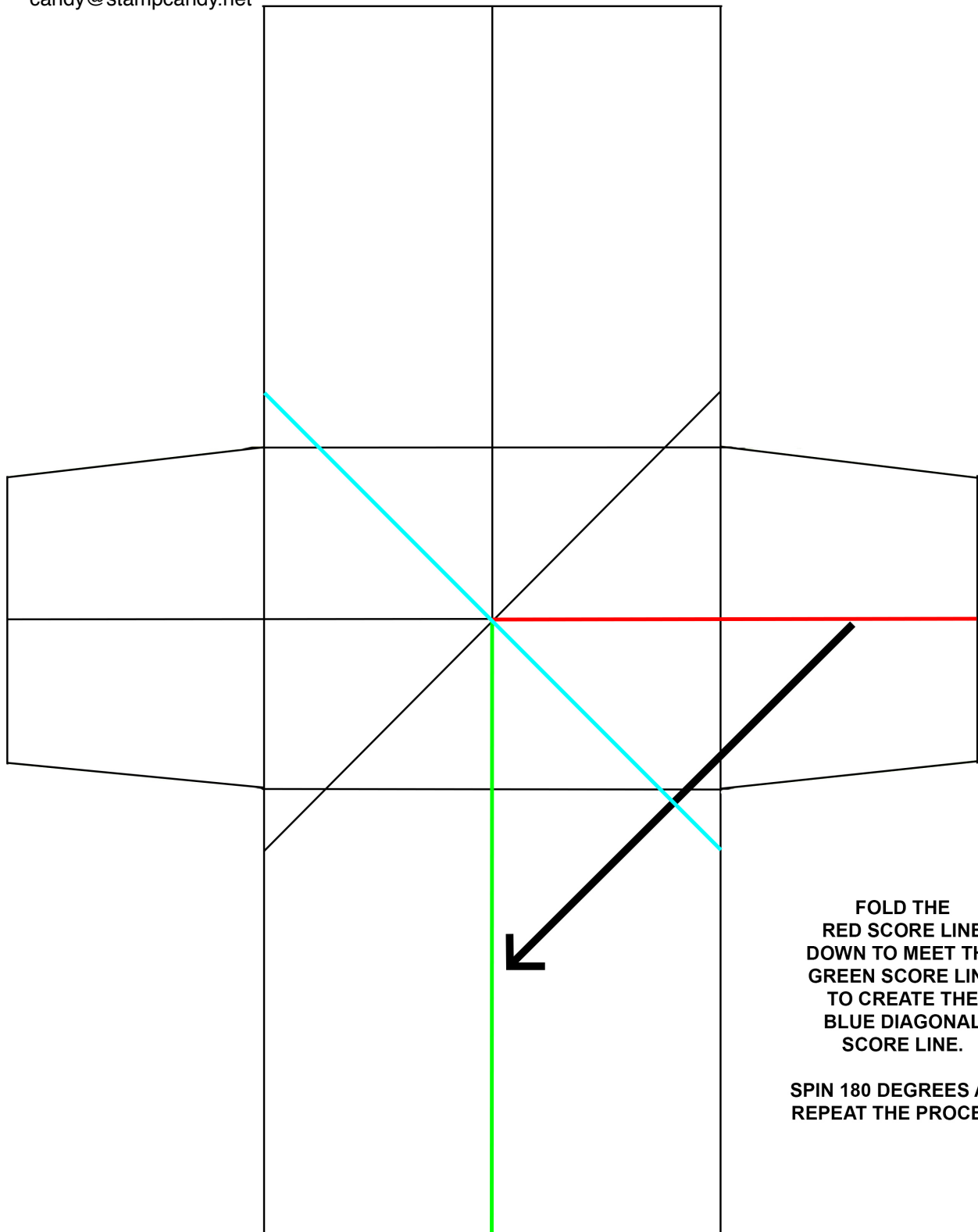


**DIAGRAM A2**

# **MECHANISM**



Candy Ford  
Independent Stampin' Up Demonstrator  
candy@stampcandy.net



FOLD THE  
RED SCORE LINE  
DOWN TO MEET THE  
GREEN SCORE LINE  
TO CREATE THE  
BLUE DIAGONAL  
SCORE LINE.

SPIN 180 DEGREES AND  
REPEAT THE PROCESS.

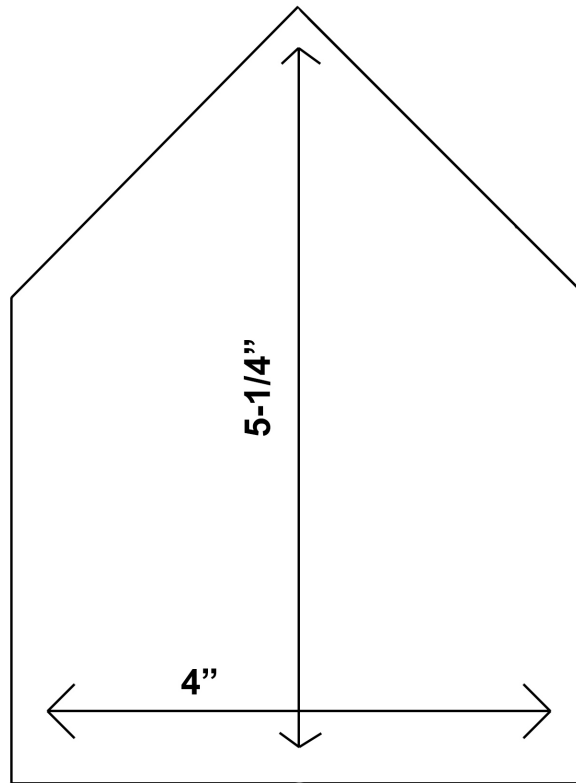
# MECHANISM

DIAGRAM B

## DIAGRAM C

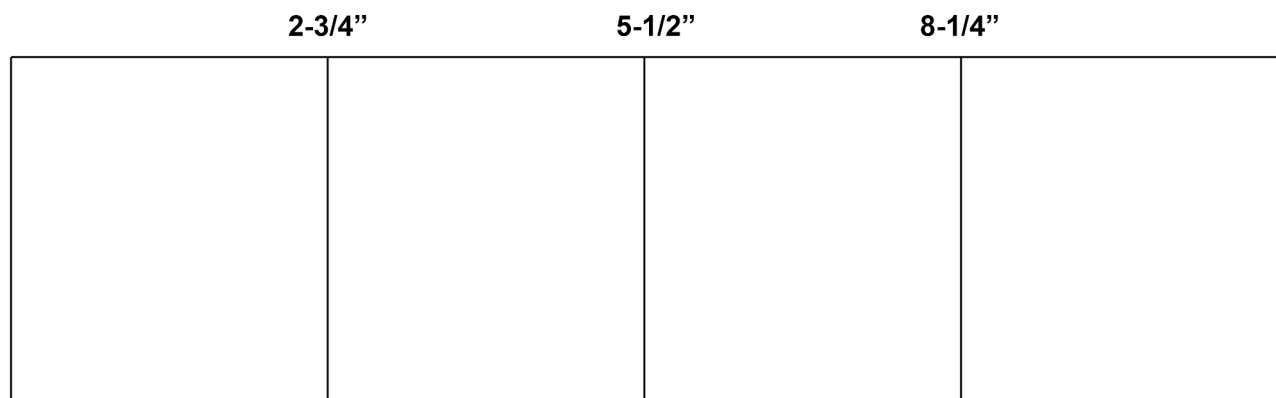


Candy Ford  
Independent Stampin' Up Demonstrator  
candy@stampcandy.net



## FOLDED MECHANISM

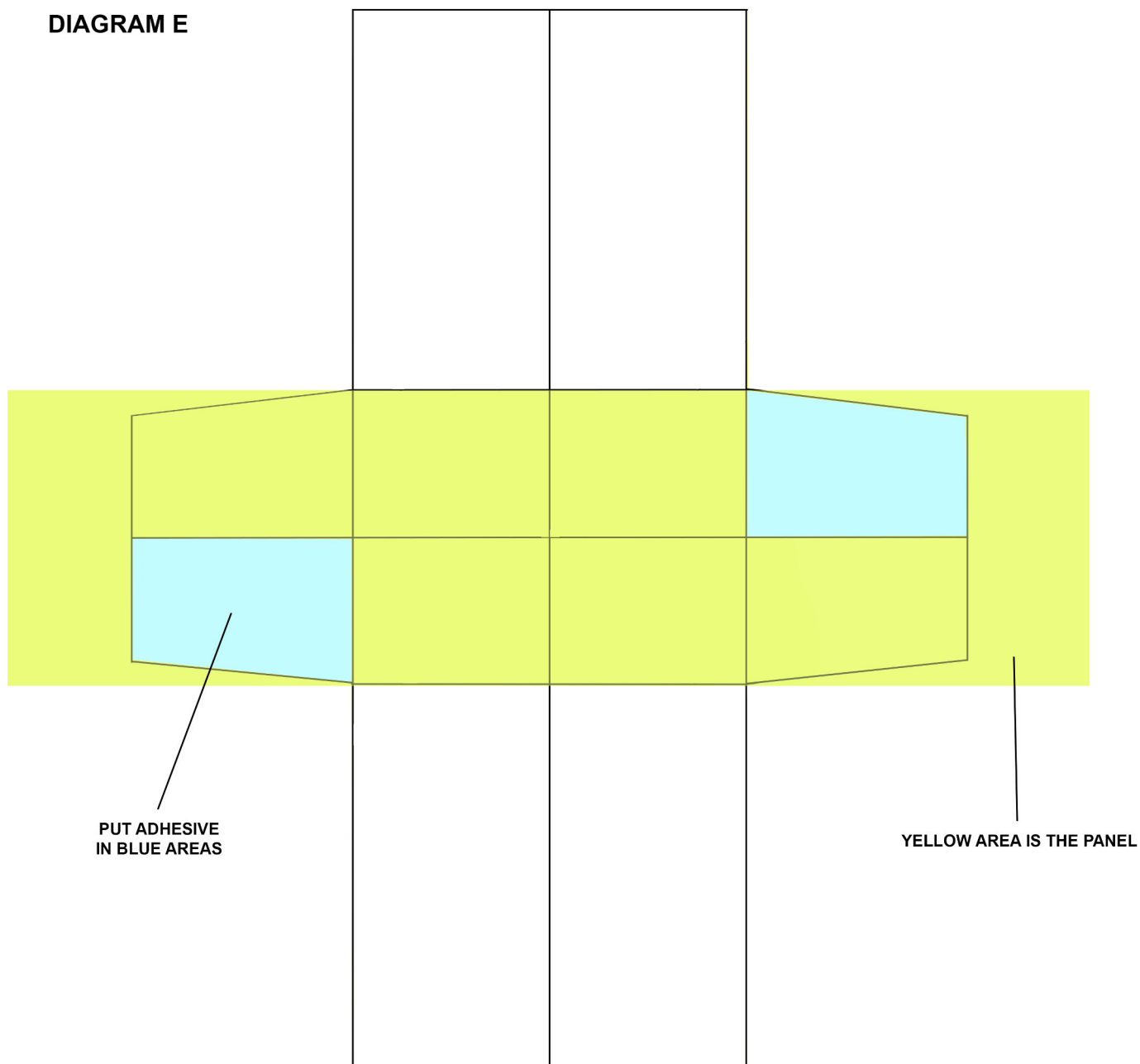
\*\*\*\*\*



## PANEL

## DIAGRAM D

**DIAGRAM E**

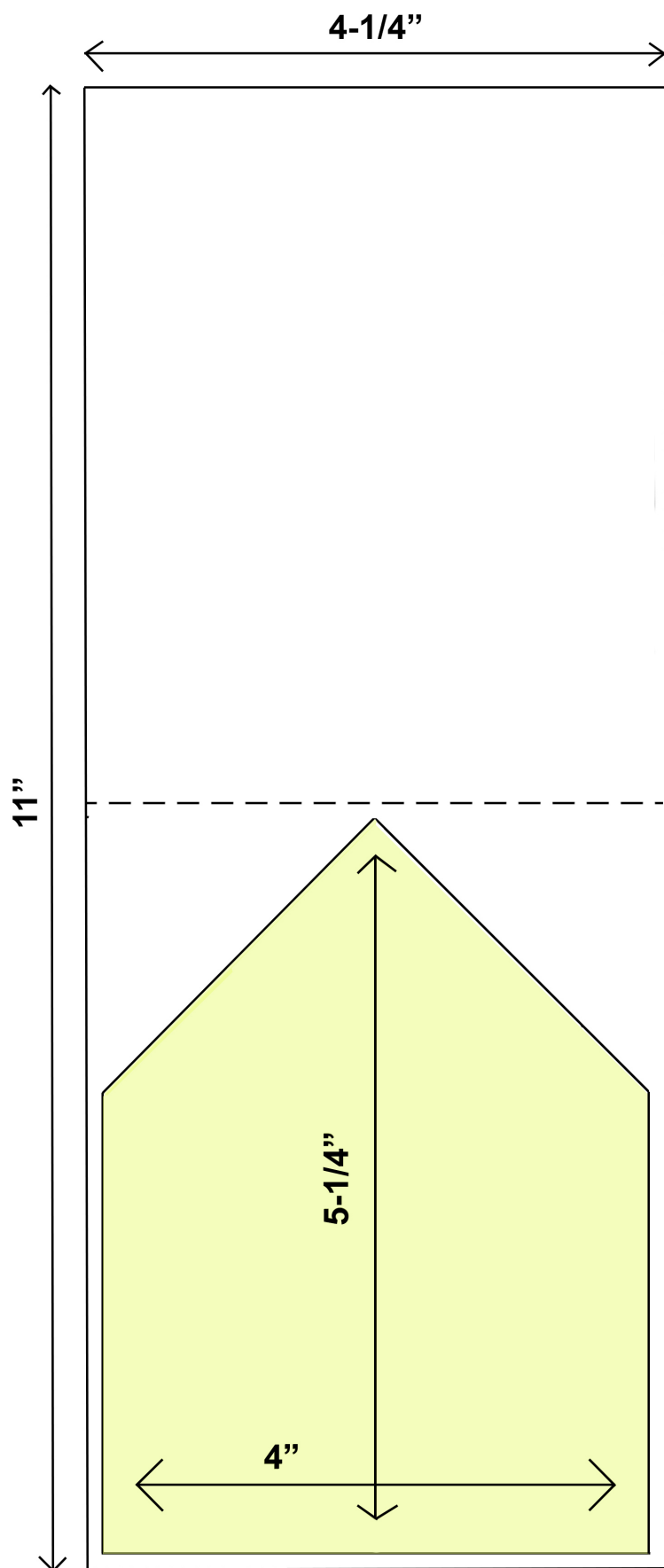


**PUT PANEL ONTO MECHANISM**



Candy Ford  
Independent Stampin' Up Demonstrator  
candy@stampcandy.net

## DIAGRAM F



## MECHANISM ON CARD BASE

